



ROLLERS

INFORMATION SHEET

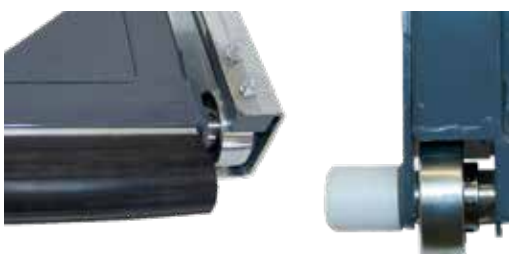
OVERVIEW

Located on the bottom corners of the door, the rollers run vertically on the door track as the door opens and closes. Our roller design is not just a simple bearing. The bearing itself is double sealed industrial grade. We press the bearing into a CNC stainless steel machined beveled sleeve. The result is a roller with superior longevity, no maintenance, and smooth operation. Diamond Doors offers two roller styles, the cantilever roller and inset roller. During the door design process, the roller type is chosen based on door application and roller loads.

The cantilever roller design is the standard roller for doors less than 60' wide. It is new and improved for easier install, operation reliability, and improved bottom seal of the door. This exclusive roller design allows the bottom rubber seal to extend further into the column, creating a superior seal. The roller wear cap on the face of the roller provides a low friction surface, so even with minor building shift or track misalignment, the door will continue to open and close with ease. This is to avoid damage to the roller itself and provide a low maintenance replacement option. Since the roller is cantilevered, installers are no longer required to trim sheeting or insulation upon installation.

The inset roller design is used on doors larger than 60' wide. The roller is inset to better transfer loads into the door frame. This design has been tested to be effective for larger applications.

ROLLER COMPARISON	CANTILEVER	INSET
J-Track (Wind Protection)	Yes	Yes
Nylon Wear Disk	Yes	No
Trim Sheeting During Install	No	Yes
Access Hatch in J-Track	Yes	No
Bottom Roller Wedge	Yes	Yes



WARRANTY

The door is free of manufacturing defects in material and workmanship for a period of two years. The door will not warp, crack, or buckle under normal intended use as a door.

FREQUENTLY ASKED QUESTIONS

Is the roller replacement process difficult?

If you ever need to replace your roller, the bottom section of the J-track is an access hatch. To remove the roller, simply loosen the set screws and slide it off the shaft. Replace with the new roller, simply and efficiently.

What makes Diamond Doors' roller design unique?

Our roller design is not just a simple bearing. The bearing itself is double sealed industrial grade. We press the bearing into a CNC machined beveled sleeve. The result is a roller with superior longevity, no maintenance, and smooth operation.

