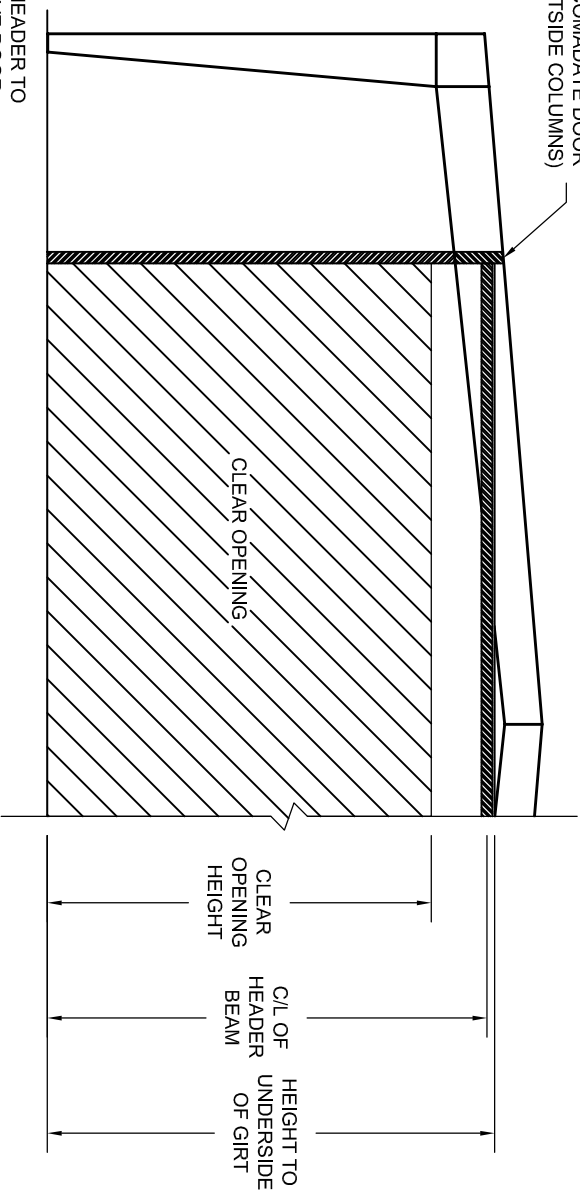


SHADED AREAS MUST BE FLUSH TO ACCOMMODATE DOOR
(HEADER BEAM WITH MAIN OUTSIDE COLUMNS)



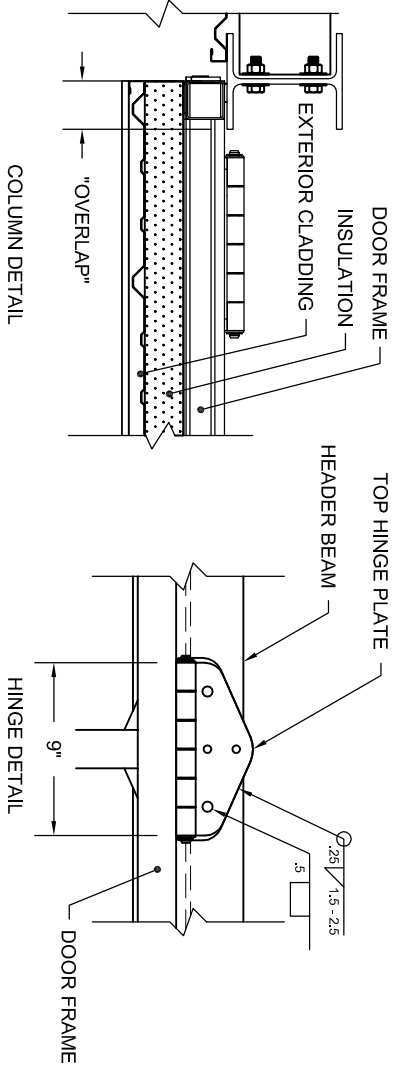
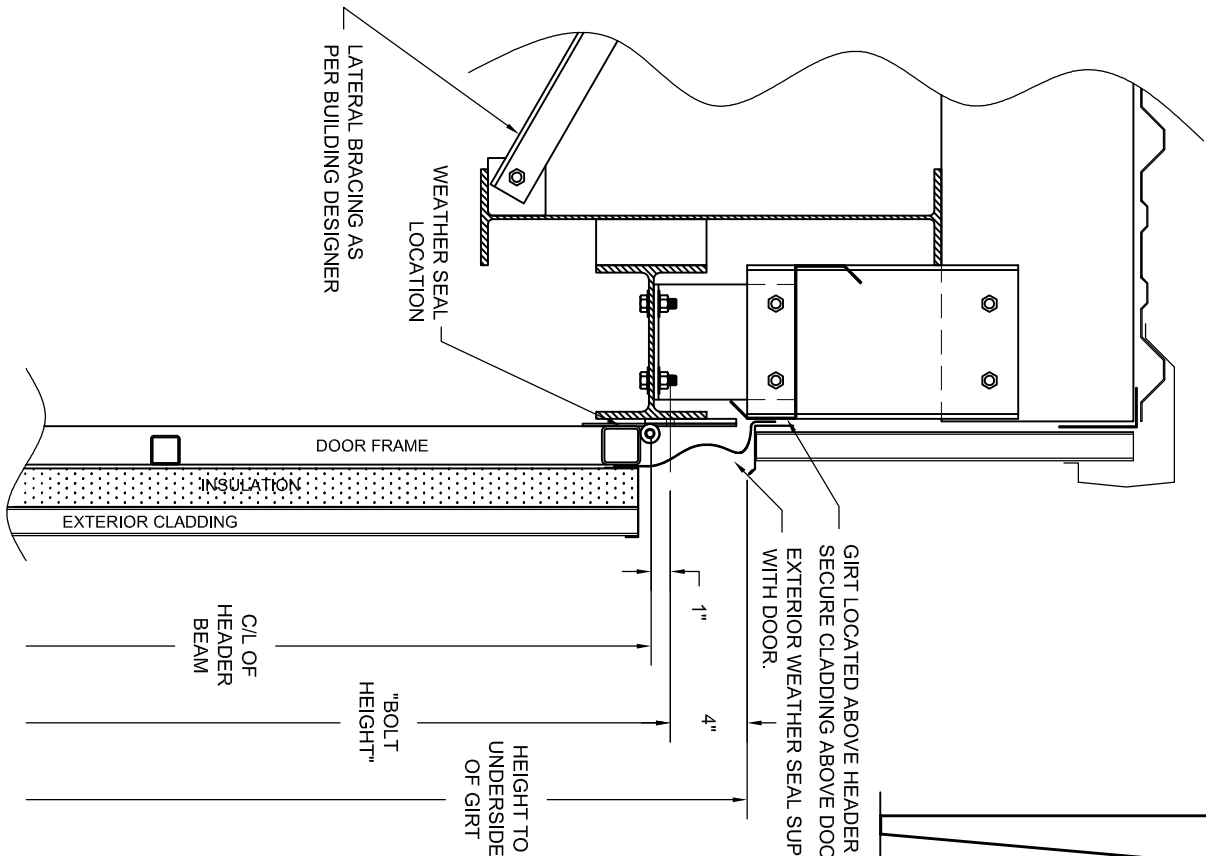
GIRT LOCATED ABOVE HEADER TO
SECURE CLADDING ABOVE DOOR.
EXTERIOR WEATHER SEAL SUPPLIED
WITH DOOR.

ALL DIMENSIONS AS MEASURED FROM FINISHED FLOOR LEVEL.

"BOLT HEIGHT" IS DEPENDENT ON CLEAR OPENING SIZE AND WILL BE SPECIFIED BY DIAMOND
DOORS. "C/L OF HEADER BEAM" AND "HEIGHT TO UNDERSIDE OF GIRT" ARE DETERMINED FROM
THE BOLT HEIGHT AS SHOWN.

HEADER BEAM TO BE FLUSH WITH MAIN OUTSIDE COLUMNS (EDGE OF CONCRETE).

IT IS THE RESPONSIBILITY OF THE BUILDING DESIGNER/MANUFACTURER TO ENSURE THE
ENDWALL FRAME AND OTHER SUPPORTING STRUCTURES FOR THE BI-FOLD DOOR ARE
ADEQUATELY SIZED BASED ON THE WEIGHT AND LOAD SPECIFICATIONS OF THE BI-FOLD DOOR.



CROSS SECTIONAL VIEW OF TOP HINGE

PROPRIETARY AND CONFIDENTIAL

THE INFORMATION CONTAINED IN THIS DRAWING IS THE PROPERTY OF DIAMOND DOORS. ANY REPRODUCTION IN PART OR AS A WHOLE WITHOUT THE WRITTEN PERMISSION OF DIAMOND DOORS IS PROHIBITED.

ALL DIMENSIONS ARE IN INCHES

TITLE:
STEEL BUILDING W/ HOR. HEADER BEAM

DRAWN:
T.S. / J.H.

SCALE:
NTS

DWG. NO.:
-

DATE:
NOV 30 / 12

DO NOT SCALE DRAWING

SHEET:
1 OF 1

REV. 2

DIAMOND DOORS

MANUFACTURERS OF QUALITY BI-FOLD DOOR SYSTEMS