

HEADER COLUMN DETAIL
STEEL QUONSET

DIAMOND DOORS
HIGH QUALITY CUSTOM ENGINEERED BI-FOLD DOORS SINCE 1998

TITLE:

STEEL QUONSET

PROPRIETARY AND CONFIDENTIAL
THE INFORMATION CONTAINED IN THIS
DRAWING IS THE SOLE PROPERTY OF DIAMOND
DOORS. ANY REPRODUCTION IN PART OR AS A
WHOLE WITHOUT THE WRITTEN PERMISSION OF
DIAMOND DOORS IS PROHIBITED.

ALL DIMENSIONS ARE IN INCHES

DWG. NO.:

Header Column Details

DRAWN: R.Q.

DATE: /16

SCALE: 1:3

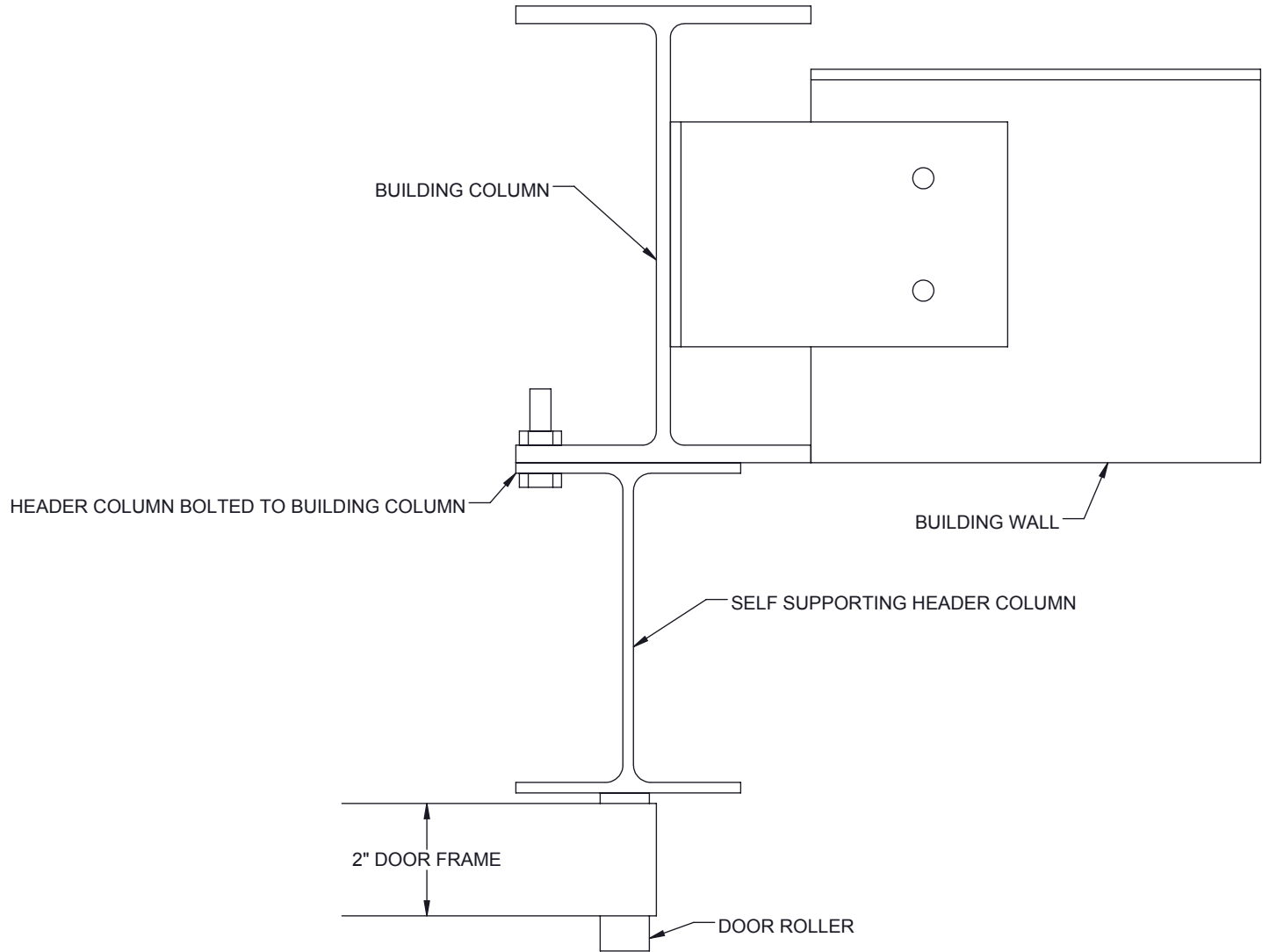
SHEET:

REV:

DO NOT SCALE DRAWING

1 OF 3

-

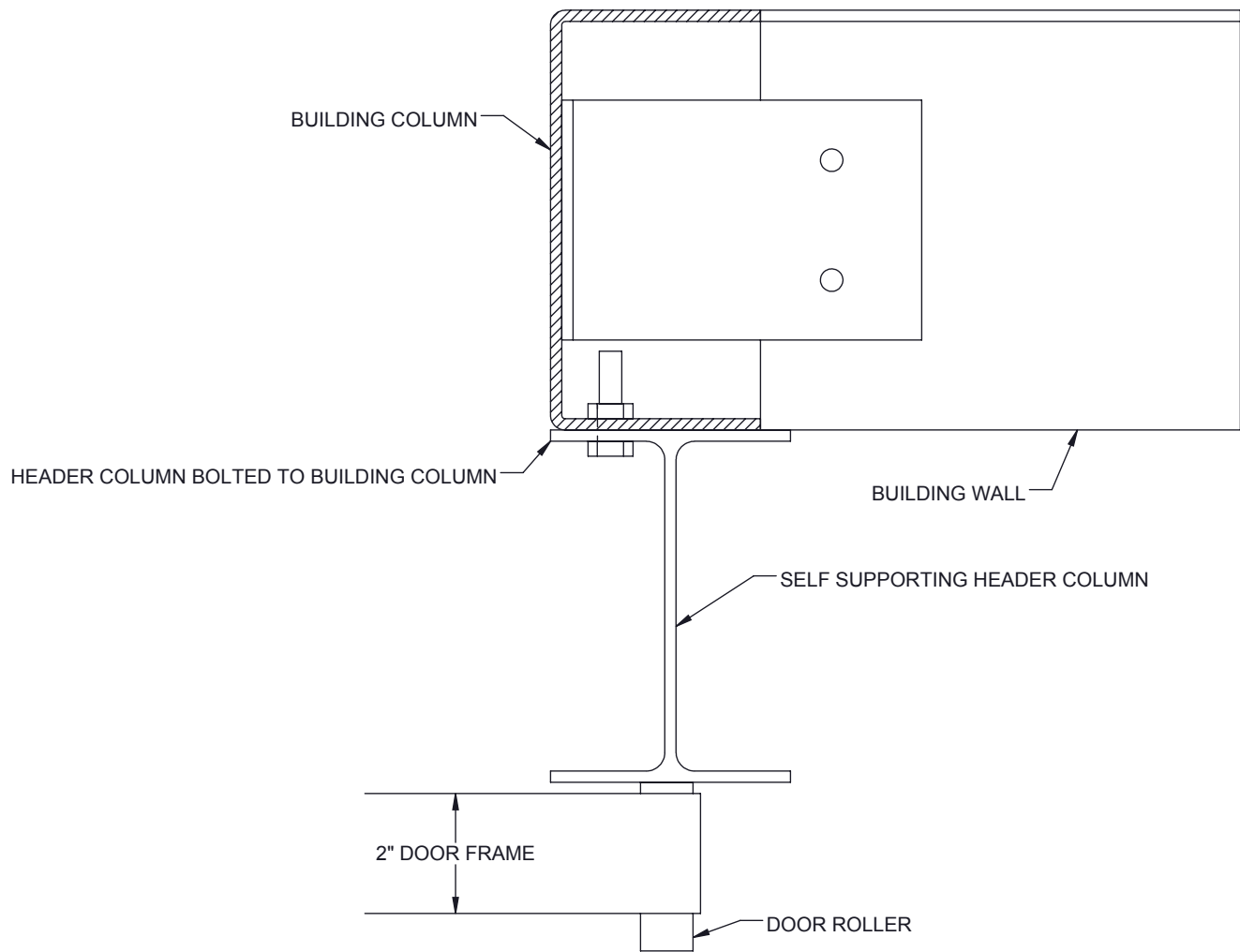


HEADER COLUMN DETAIL
STEEL BUILDING

DIAMOND DOORS
HIGH QUALITY CUSTOM ENGINEERED BI-FOLD DOORS SINCE 1998

TITLE:
STEEL BUILDING

PROPRIETARY AND CONFIDENTIAL THE INFORMATION CONTAINED IN THIS DRAWING IS THE SOLE PROPERTY OF DIAMOND DOORS. ANY REPRODUCTION IN PART OR AS A WHOLE WITHOUT THE WRITTEN PERMISSION OF DIAMOND DOORS IS PROHIBITED.		DWG. NO.: Header Column Details	
		DRAWN: R.Q.	DATE: /16
		SCALE: 1:3	SHEET: REV:
ALL DIMENSIONS ARE IN INCHES		DO NOT SCALE DRAWING	2 OF 3 -



HEADER COLUMN DETAIL
STEEL BUILDING

DIAMOND DOORS
HIGH QUALITY CUSTOM ENGINEERED BI-FOLD DOORS SINCE 1998

TITLE:
STEEL BUILDING

PROPRIETARY AND CONFIDENTIAL THE INFORMATION CONTAINED IN THIS DRAWING IS THE SOLE PROPERTY OF DIAMOND DOORS. ANY REPRODUCTION IN PART OR AS A WHOLE WITHOUT THE WRITTEN PERMISSION OF DIAMOND DOORS IS PROHIBITED.		DWG. NO.: Header Column Details	
		DRAWN: R.Q.	DATE: /16
		SCALE: 1:3	SHEET: 3 OF 3 REV: -
ALL DIMENSIONS ARE IN INCHES		DO NOT SCALE DRAWING	