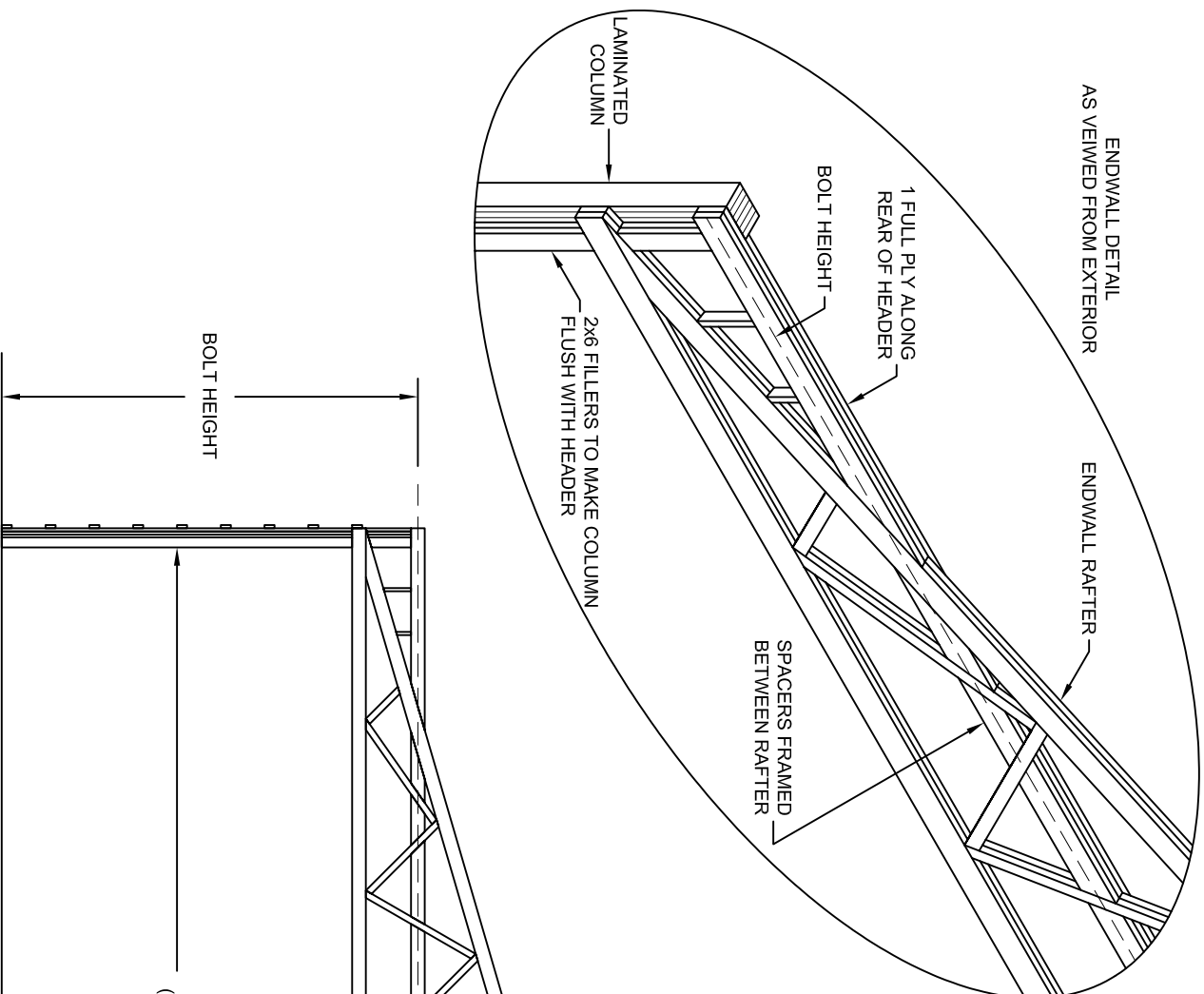


MOUNTING SURFACE FOR BI-FOLD DOOR MUST BE FLUSH (HEADER AND COLUMN FACE), CENTER OF HEADER TO BE FRAMED IN AT SPECIFIED BOLT HEIGHT OF BI-FOLD DOOR.



**DIAMOND DOORS**  
MANUFACTURERS OF QUALITY BI-FOLD DOOR SYSTEMS

MANUFACTURERS OF QUALITY BI-FOLD DOOR SYSTEMS

TITLE:	EXPLORE THE WORLD OF THE
--------	--------------------------

## EXTEND PAST ROOFLINE

DRAWN:	T.S.	DATE:	AUG 29/08
--------	------	-------	-----------

SCALE:	NTS	DO NOT SCALE DRAWING
--------	-----	----------------------

ALL DIMENSIONS ARE IN INCHES

DWG. NO.:

SHEET:

1 OF 1 REV: B